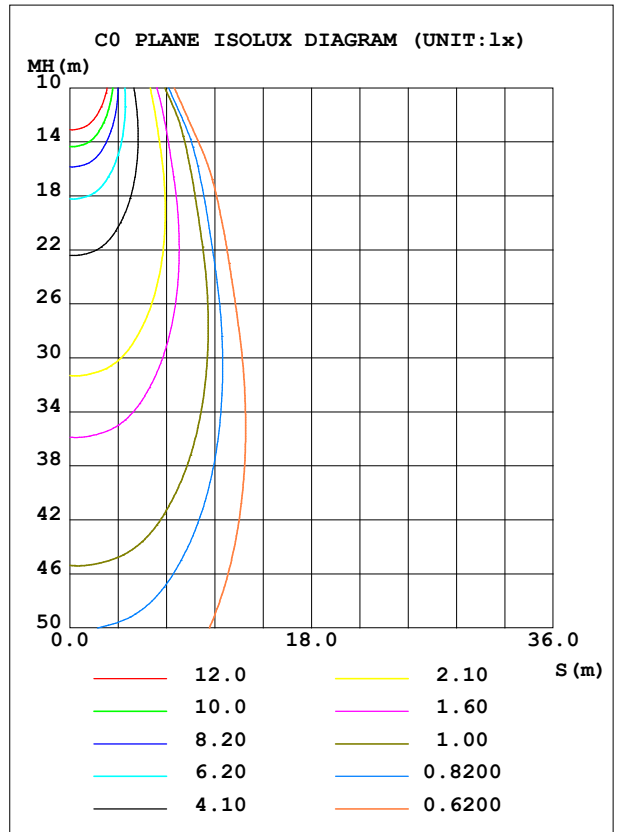
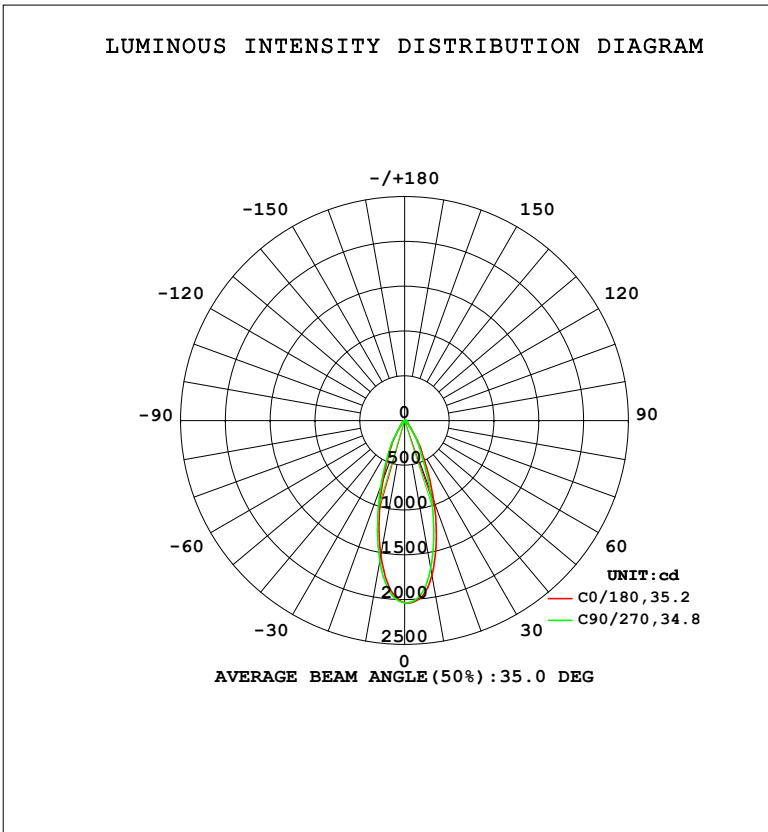


LUMINAIRE PHOTOMETRIC TEST REPORT

Test:U:120.28V I:0.1123A P:13.283W PF:0.9830 Freq:59.98Hz		
UTHDi:0.00% ITHDi:0.00% KDisp:0 Lamp Flux:928.319x1 lm		
NAME: DLDM-2-CCT-15W	TYPE:	WEIGHT:
SPEC.: 3000K	DIM.:	SERIAL No.:
MFR.: DLL	SUR.:	Shielding Angle:

DATA OF LAMP		PHOTOMETRIC DATA				Eff: 69.89 lm/W
MODEL	DLDM-2-CCT-15W	I <sub>max</sub> (cd)	2040	S/MH (C0/180)		0.53
NOMINAL POWER (W)	15	LOR (%)	100.0	S/MH (C90/270)		0.55
RATED VOLTAGE (V)	120	TOTAL FLUX (lm)	928.32	η UP, DN (C0-180)		0.0, 53.9
NOMINAL FLUX (lm)	928.319	CIE CLASS	DIRECT	η UP, DN (C180-360)		0.0, 46.1
LAMPS INSIDE	1	η up (%)	0.0	CIBSE SHR NOM		0.50
TEST VOLTAGE (V)	120	η down (%)	100.0	CIBSE SHR MAX		0.60



C Range: 0 - 360DEG  
 C Interval: 22.5DEG  
 Test Speed: HIGH  
 Temperature: 24.3 °C  
 Operators:  
 Test Date: 2024-06-19

γ Range: 0 - 90DEG  
 γ Interval: 1.0DEG  
 Test System: EVERFINE GO-SPEX500\_V1 SYSTEM V2.00.460  
 Humidity: 65.0%  
 Test Distance: 3.080m [K=1.0000]  
 Remarks:

ZONAL FLUX DIAGRAM

ZONAL FLUX DIAGRAM:

$\gamma$	C0	C45	C90	C135	C180	C225	C270	C315	$\gamma$	$\Phi$ zone	$\Phi$ total	%lum, lamp
10	1756	1703	1681	1732	1532	1569	1597	1559	0- 10	175.2	175.2	18.9,18.9
20	955.8	881.4	842.0	937.2	708.4	733.0	782.1	749.1	10- 20	335.1	510.3	55,55
30	357.7	335.9	315.6	361.4	261.5	270.0	289.2	281.7	20- 30	233.9	744.2	80.2,80.2
40	97.85	91.84	86.36	99.59	69.49	69.81	72.20	71.34	30- 40	102.8	847.0	91.2,91.2
50	38.01	36.51	35.25	36.40	29.75	30.52	31.74	31.73	40- 50	40.26	887.3	95.6,95.6
60	19.10	18.19	17.27	17.80	14.41	15.23	16.04	15.96	50- 60	21.66	909.0	97.9,97.9
70	9.624	8.949	8.495	8.841	7.059	7.521	8.028	7.953	60- 70	12.02	921.0	99.2,99.2
80	3.940	3.500	3.218	3.440	2.338	2.676	2.990	2.875	70- 80	5.849	926.8	99.8,99.8
90	0.3315	0.0958	0.0555	0.0673	0.0537	0.0406	0.0531	0.0423	80- 90	1.490	928.3	100,100
100									90-100			
110									100-110			
120									110-120			
130									120-130			
140									130-140			
150									140-150			
160									150-160			
170									160-170			
180									170-180			
DEG	LUMINOUS INTENSITY:cd									UNIT:lm		

Conical surface Flux(90deg): 870.9 lm

%lum = 93.8%

%lamp = 93.8%

Conical surface Flux(130deg): 915.88 lm

%lum = 98.7%

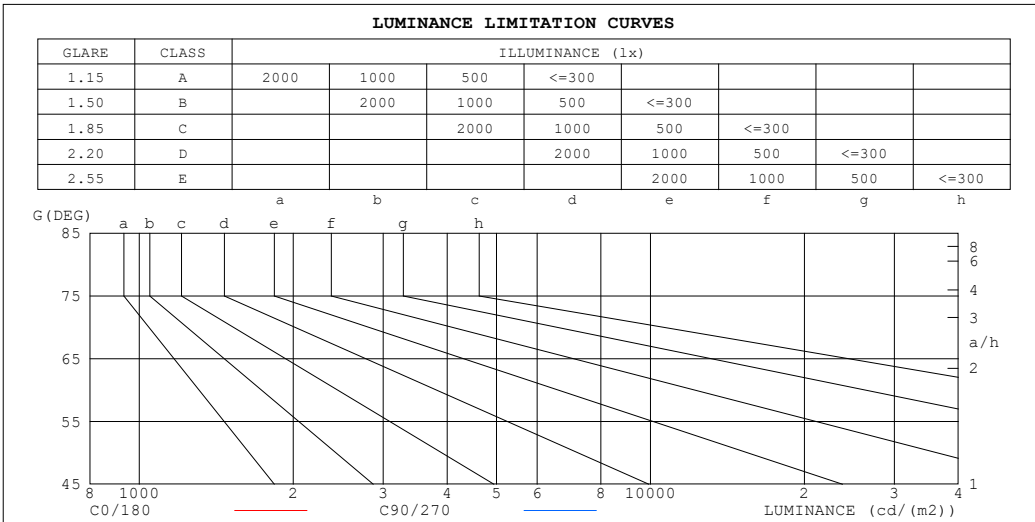
%lamp = 98.7%

C Range: 0 - 360DEG  
 C Interval: 22.5DEG  
 Test Speed: HIGH  
 Temperature:24.3°C  
 Operators:  
 Test Date:2024-06-19

$\gamma$  Range: 0 - 90DEG  
 $\gamma$  Interval: 1.0DEG  
 Test System:EVERFINE GO-SPEX500\_V1 SYSTEM V2.00.460  
 Humidity:65.0%  
 Test Distance:3.080m [K=1.0000]  
 Remarks:

**LUMINANCE LIMITATION CURVES**

<b>Test:U:120.28V I:0.1123A P:13.283W PF:0.9830 Freq:59.98Hz</b> <b>UTHDi:0.00% ITHDi:0.00% KDisp:0 Lamp Flux:928.319x1 lm</b>		
<b>NAME: DLDM-2-CCT-15W</b>	<b>TYPE:</b>	<b>WEIGHT:</b>
<b>SPEC.: 3000K</b>	<b>DIM.:</b>	<b>SERIAL No.:</b>
<b>MFR.: DLL</b>	<b>SUR.:</b>	<b>Shielding Angle:</b>



LUMINANCE cd/(m2)		
G (DEG)	C0/180	C90/270
85	202	141
80	207	169
75	227	196
70	256	226
65	294	263
60	348	314
55	433	393
50	539	499
45	763	673

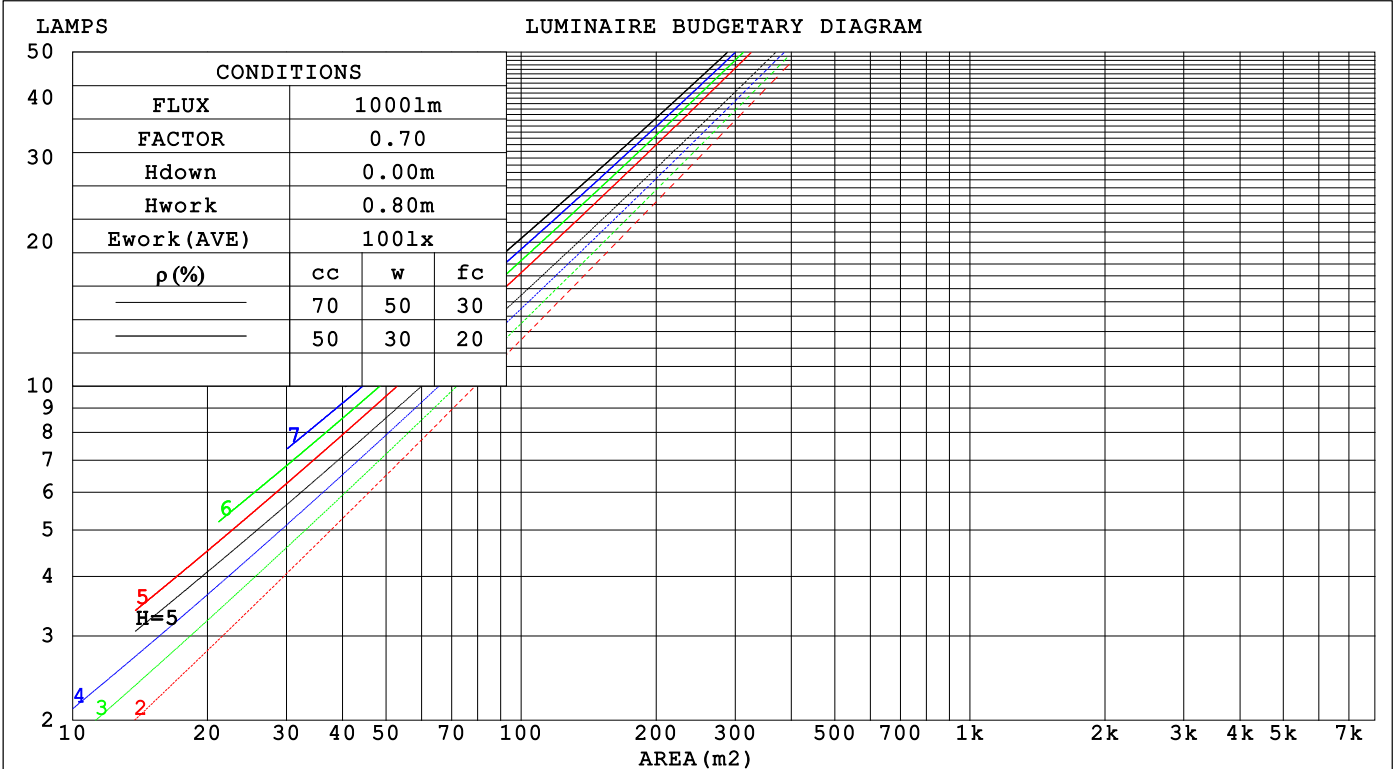
C Range: 0 - 360DEG  
 C Interval: 22.5DEG  
 Test Speed: HIGH  
 Temperature: 24.3°C  
 Operators:  
 Test Date: 2024-06-19

γ Range: 0 - 90DEG  
 γ Interval: 1.0DEG  
 Test System: EVERFINE GO-SPEX500\_V1 SYSTEM V2.00.460  
 Humidity: 65.0%  
 Test Distance: 3.080m [K=1.0000]  
 Remarks:

CU AND LUMINAIRE BUDGETARY ESTIMATE DIAGRAM

Test:U:120.28V I:0.1123A P:13.283W PF:0.9830 Freq:59.98Hz		
UTHDi:0.00% ITHDi:0.00% KDisp:0 Lamp Flux:928.319x1 lm		
NAME: DLDM-2-CCT-15W	TYPE:	WEIGHT:
SPEC.: 3000K	DIM.:	SERIAL No.:
MFR.: DLL	SUR.:	Shielding Angle:

pcc	80%			70%			50%			30%			10%			0
pw	50%	30%	10%	50%	30%	10%	50%	30%	10%	50%	30%	10%	50%	30%	10%	0
pfc	20%			20%			20%			20%			20%			0
RCR	RCR:Room Cavity Ratio			Coefficients of Utilization(CU)												
0.0	1.19	1.19	1.19	1.16	1.16	1.16	1.11	1.11	1.11	1.06	1.06	1.06	1.02	1.02	1.02	1.00
1.0	1.11	1.09	1.07	1.09	1.07	1.05	1.05	1.03	1.02	1.01	.00	.99	.98	.97	.96	.94
2.0	1.04	1.00	.97	1.02	.99	.96	.99	.96	.94	.96	.94	.92	.93	.92	.90	.88
3.0	.98	.93	.89	.96	.92	.89	.94	.90	.87	.91	.88	.86	.89	.87	.85	.83
4.0	.92	.87	.83	.91	.86	.83	.89	.85	.82	.87	.84	.81	.85	.82	.80	.78
5.0	.87	.82	.78	.86	.81	.78	.85	.80	.77	.83	.79	.76	.81	.78	.76	.74
6.0	.83	.77	.73	.82	.77	.73	.81	.76	.73	.79	.75	.72	.78	.74	.72	.70
7.0	.79	.73	.70	.78	.73	.69	.77	.72	.69	.76	.72	.69	.75	.71	.68	.67
8.0	.75	.70	.66	.75	.69	.66	.74	.69	.66	.73	.68	.65	.72	.68	.65	.64
9.0	.72	.67	.63	.71	.66	.63	.70	.66	.63	.70	.65	.62	.69	.65	.62	.61
10.0	.69	.64	.60	.68	.63	.60	.68	.63	.60	.67	.63	.60	.66	.62	.60	.58



C Range: 0 - 360DEG  
 C Interval: 22.5DEG  
 Test Speed: HIGH  
 Temperature:24.3℃  
 Operators:  
 Test Date:2024-06-19

γ Range: 0 - 90DEG  
 γ Interval: 1.0DEG  
 Test System:EVERFINE GO-SPEX500\_V1 SYSTEM V2.00.460  
 Humidity:65.0%  
 Test Distance:3.080m [K=1.0000]  
 Remarks:

WEC AND CCEC

Test:U:120.28V I:0.1123A P:13.283W PF:0.9830 Freq:59.98Hz		
UTHDi:0.00% ITHDi:0.00% KDisp:0 Lamp Flux:928.319x1 lm		
NAME: DLDM-2-CCT-15W	TYPE:	WEIGHT:
SPEC.: 3000K	DIM.:	SERIAL No.:
MFR.: DLL	SUR.:	Shielding Angle:

$\rho_{CC}$	80%			70%			50%			30%			10%			0
$\rho_w$	50%	30%	10%	50%	30%	10%	50%	30%	10%	50%	30%	10%	50%	30%	10%	0
$\rho_{fc}$	20%			20%			20%			20%			20%			0
RCR	RCR:Room Cavity Ratio						Wall Exitance Coefficients(WEC)									
0.0																
1.0	.171	.097	.031	.164	.094	.030	.152	.087	.028	.140	.081	.026	.129	.075	.024	
2.0	.162	.089	.027	.156	.086	.026	.145	.081	.025	.136	.076	.024	.127	.072	.023	
3.0	.152	.081	.024	.147	.079	.024	.139	.075	.023	.130	.071	.022	.123	.068	.021	
4.0	.144	.075	.022	.140	.073	.022	.132	.070	.021	.125	.067	.020	.118	.064	.020	
5.0	.136	.069	.020	.132	.068	.020	.126	.065	.019	.120	.063	.019	.114	.061	.018	
6.0	.129	.065	.018	.126	.064	.018	.120	.062	.018	.115	.060	.018	.110	.058	.017	
7.0	.123	.061	.017	.120	.060	.017	.115	.058	.017	.110	.056	.016	.106	.055	.016	
8.0	.117	.057	.016	.114	.056	.016	.110	.055	.016	.106	.054	.015	.102	.052	.015	
9.0	.112	.054	.015	.109	.053	.015	.105	.052	.015	.102	.051	.015	.098	.050	.014	
10.0	.107	.051	.014	.105	.051	.014	.101	.050	.014	.098	.049	.014	.095	.048	.014	

$\rho_{CC}$	80%			70%			50%			30%			10%			0
$\rho_w$	50%	30%	10%	50%	30%	10%	50%	30%	10%	50%	30%	10%	50%	30%	10%	0
$\rho_{fc}$	20%			20%			20%			20%			20%			0
RCR	RCR:Room Cavity Ratio						Ceiling Cavity Exitance Coefficients(CCEC)									
0.0	.190	.190	.190	.163	.163	.163	.111	.111	.111	.064	.064	.064	.020	.020	.020	
1.0	.171	.157	.145	.146	.135	.125	.100	.093	.087	.058	.054	.050	.018	.017	.016	
2.0	.155	.133	.114	.133	.114	.098	.091	.079	.069	.052	.046	.040	.017	.015	.013	
3.0	.142	.114	.091	.122	.098	.079	.083	.068	.055	.048	.040	.033	.015	.013	.011	
4.0	.131	.099	.074	.112	.085	.064	.077	.059	.045	.045	.035	.027	.014	.011	.009	
5.0	.122	.087	.061	.104	.075	.053	.072	.052	.038	.042	.031	.022	.013	.010	.007	
6.0	.114	.077	.051	.098	.067	.045	.067	.047	.032	.039	.028	.019	.013	.009	.006	
7.0	.107	.070	.044	.092	.060	.038	.063	.042	.027	.037	.025	.016	.012	.008	.005	
8.0	.101	.063	.037	.087	.055	.033	.060	.038	.023	.035	.023	.014	.011	.007	.005	
9.0	.095	.058	.033	.082	.050	.028	.057	.035	.020	.033	.021	.012	.011	.007	.004	
10.0	.090	.053	.029	.078	.046	.025	.054	.033	.018	.032	.019	.011	.010	.006	.004	

C Range: 0 - 360DEG  
 C Interval: 22.5DEG  
 Test Speed: HIGH  
 Temperature:24.3℃  
 Operators:  
 Test Date:2024-06-19

$\gamma$  Range: 0 - 90DEG  
 $\gamma$  Interval: 1.0DEG  
 Test System:EVERFINE GO-SPEX500\_V1 SYSTEM V2.00.460  
 Humidity:65.0%  
 Test Distance:3.080m [K=1.0000]  
 Remarks:

**UGR(Unified Glare Rating) Table**

Test:U:120.28V I:0.1123A P:13.283W PF:0.9830 Freq:59.98Hz UTHDi:0.00% ITHDi:0.00% KDisp:0 Lamp Flux:928.319x1 lm		
NAME: DLDM-2-CCT-15W	TYPE:	WEIGHT:
SPEC.: 3000K	DIM.:	SERIAL No.:
MFR.: DLL	SUR.:	Shielding Angle:

ceiling/cavity	0.7	0.7	0.5	0.5	0.3	0.7	0.7	0.5	0.5	0.3
walls	0.5	0.3	0.5	0.3	0.3	0.5	0.3	0.5	0.3	0.3
working plane	0.2	0.2	0.2	0.2	0.2	0.2	0.2	0.2	0.2	0.2

Room dimensions	Viewed crosswise					Viewed endwise				
x = 2H y = 2H	6.9	7.7	7.1	7.9	8.0	6.2	7.1	6.5	7.3	7.4
3H	7.1	7.9	7.4	8.1	8.3	6.5	7.3	6.7	7.5	7.7
4H	7.2	8.0	7.5	8.2	8.4	6.6	7.4	6.9	7.6	7.8
6H	7.3	8.0	7.6	8.3	8.5	6.7	7.4	7.0	7.6	7.9
8H	7.4	8.0	7.7	8.3	8.6	6.7	7.4	7.0	7.6	7.9
12H	7.4	8.0	7.7	8.3	8.6	6.7	7.3	7.0	7.6	7.9
4H 2H	6.9	7.6	7.1	7.8	8.0	6.3	7.0	6.6	7.3	7.5
3H	7.2	7.9	7.6	8.2	8.4	6.7	7.3	7.0	7.6	7.9
4H	7.4	8.0	7.8	8.3	8.6	6.8	7.4	7.2	7.7	8.0
6H	7.6	8.1	8.0	8.5	8.8	7.0	7.5	7.3	7.8	8.2
8H	7.7	8.1	8.0	8.5	8.9	7.0	7.5	7.4	7.8	8.2
12H	7.7	8.1	8.1	8.5	8.9	7.0	7.5	7.4	7.8	8.2
8H 4H	7.4	7.9	7.8	8.3	8.6	6.9	7.4	7.3	7.7	8.1
6H	7.7	8.1	8.1	8.5	8.9	7.1	7.5	7.5	7.9	8.3
8H	7.8	8.1	8.2	8.5	9.0	7.1	7.5	7.6	7.9	8.3
12H	7.8	8.2	8.3	8.6	9.1	7.2	7.5	7.6	7.9	8.4
12H 4H	7.4	7.8	7.8	8.2	8.6	6.8	7.3	7.2	7.7	8.0
6H	7.6	8.0	8.1	8.4	8.9	7.0	7.4	7.5	7.8	8.3
8H	7.8	8.1	8.2	8.5	9.0	7.1	7.4	7.6	7.9	8.4

Variations with the observer position at spacings(CIE Pub.117):		
S = 1.0H	+ 1.4 / - 1.5	+ 1.1 / - 1.5
1.5H	+ 2.5 / - 1.1	+ 2.0 / - 1.0
2.0H	+ 1.8 / - 1.1	+ 1.6 / - 1.1

CIE Pub.117, 928.3 lm Total Lamp Luminous Flux Correct (8log(F/F0) = -0.3)  
 Area: 0.111 m2

C Range: 0 - 360DEG	γ Range: 0 - 90DEG
C Interval: 22.5DEG	γ Interval: 1.0DEG
Test Speed: HIGH	Test System:EVERFINE GO-SPEX500_V1 SYSTEM V2.00.460
Temperature:24.3℃	Humidity:65.0%
Operators:	Test Distance:3.080m [K=1.0000]
Test Date:2024-06-19	Remarks:

**UTILIZATION FACTORS TABLE**

Test:U:120.28V I:0.1123A P:13.283W PF:0.9830 Freq:59.98Hz UTHDi:0.00% ITHDi:0.00% KDisp:0 Lamp Flux:928.319x1 lm		
NAME: DLDM-2-CCT-15W	TYPE:	WEIGHT:
SPEC.: 3000K	DIM.:	SERIAL No.:
MFR.: DLL	SUR.:	Shielding Angle:

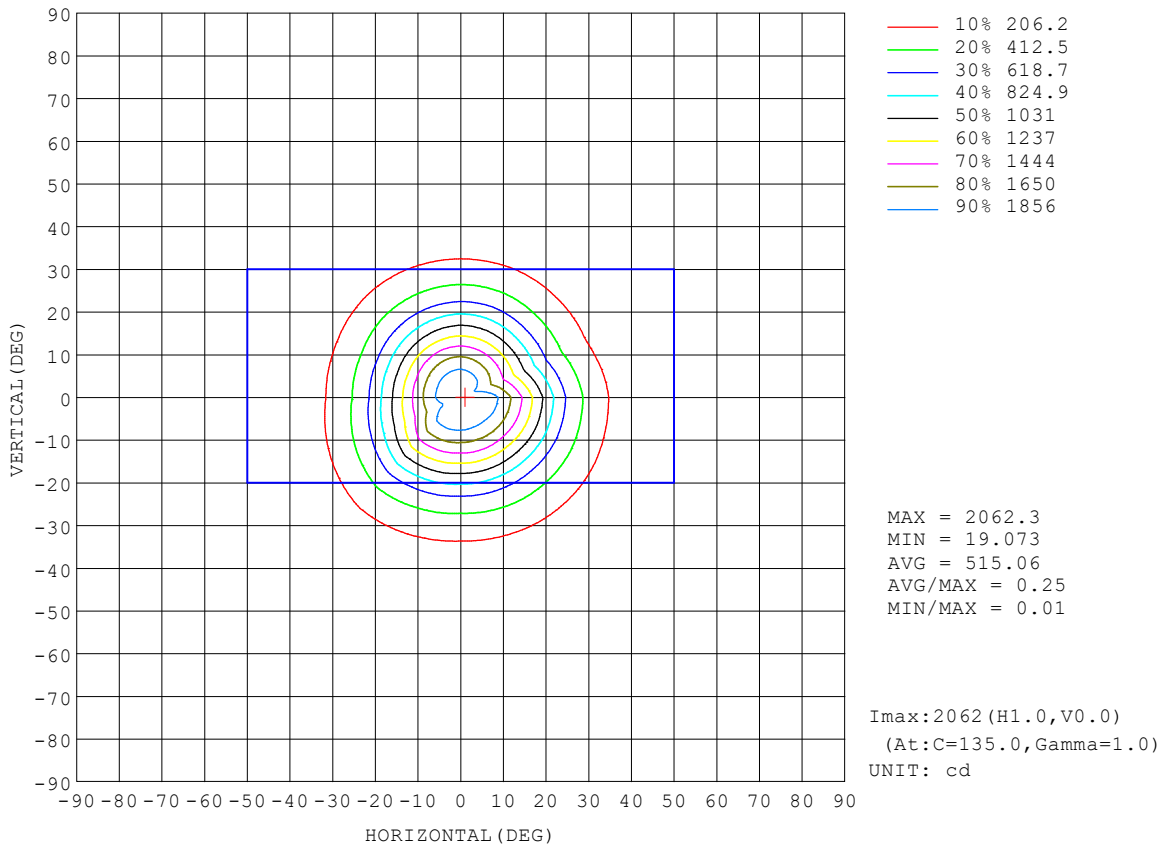
REFLECTANCE										
Ceiling	0.8	0.8	0.8	0.7	0.7	0.7	0.5	0.5	0.5	0
Walls	0.7	0.5	0.3	0.7	0.5	0.3	0.7	0.5	0.3	0
Working plane	0.2	0.2	0.2	0.2	0.2	0.2	0.2	0.2	0.2	0
ROOM INDEX	UTILIZATION FACTORS (PERCENT) $k(RI) \times RCR = 5$									
$k = 0.60$	86	80	76	86	79	75	85	79	75	72
0.80	94	88	84	93	87	84	92	87	83	79
1.00	98	92	89	97	92	88	96	92	88	84
1.25	102	97	93	101	96	93	99	95	92	88
1.50	105	100	97	104	99	96	102	98	95	90
2.00	108	104	100	107	103	99	104	101	98	93
2.50	110	106	103	108	104	102	105	102	100	94
3.00	111	108	105	110	106	104	106	104	102	95
4.00	113	111	108	111	109	107	108	106	104	97
5.00	115	112	110	113	111	109	109	107	106	98
ROOM INDEX	UF(total)									Direct
According to DIN EN 13032-2 2004			Suspended				SHRNOM = 1.25			

C Range: 0 - 360DEG  
 C Interval: 22.5DEG  
 Test Speed: HIGH  
 Temperature: 24.3°C  
 Operators:  
 Test Date: 2024-06-19

$\gamma$  Range: 0 - 90DEG  
 $\gamma$  Interval: 1.0DEG  
 Test System: EVERFINE GO-SPEX500\_V1 SYSTEM V2.00.460  
 Humidity: 65.0%  
 Test Distance: 3.080m [K=1.0000]  
 Remarks:

**ISOCANDELA DIAGRAM**

Test:U:120.28V I:0.1123A P:13.283W PF:0.9830 Freq:59.98Hz UTHDi:0.00% ITHDi:0.00% KDisp:0 Lamp Flux:928.319x1 lm		
NAME: DLDM-2-CCT-15W	TYPE:	WEIGHT:
SPEC.: 3000K	DIM.:	SERIAL No.:
MFR.: DLL	SUR.:	Shielding Angle:

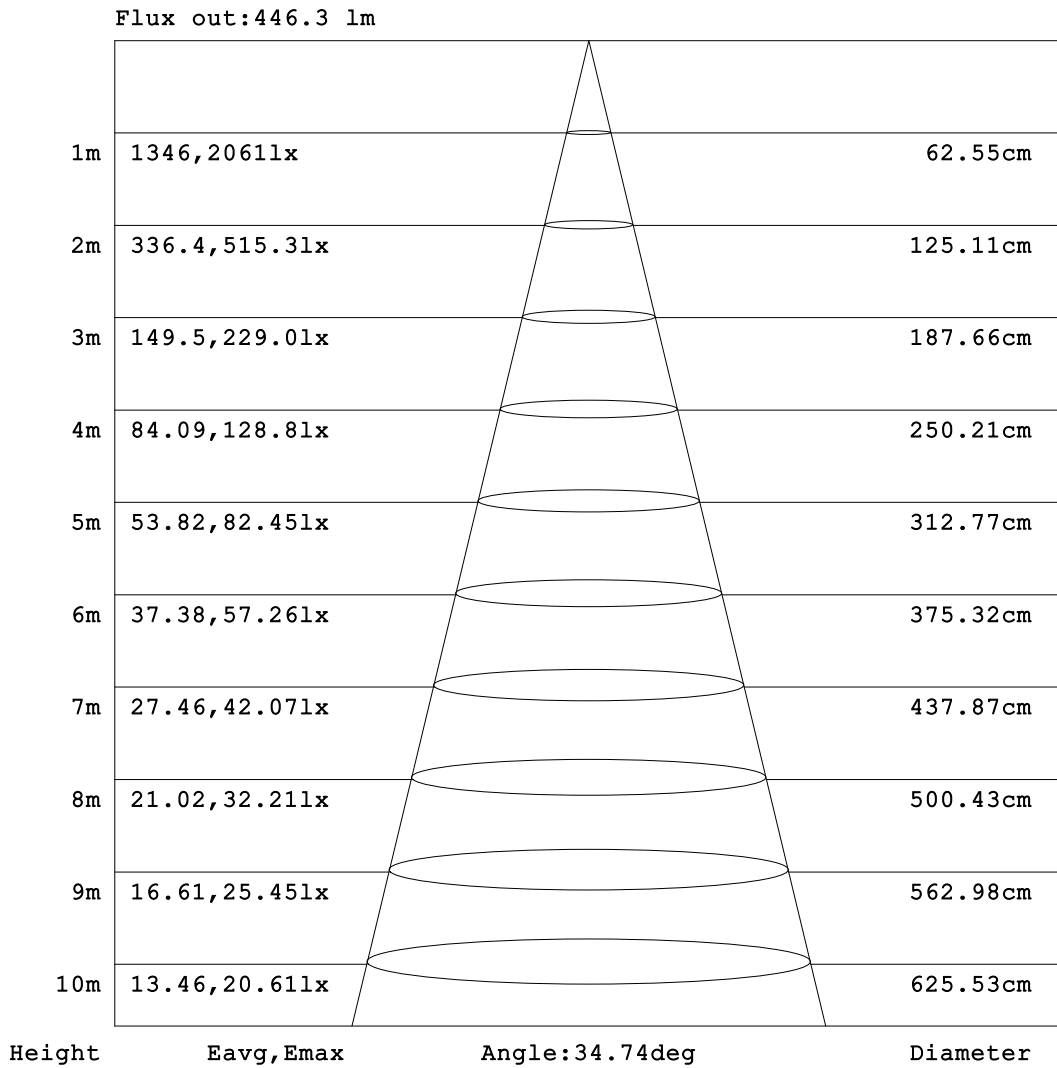


C Range: 0 - 360DEG  
 C Interval: 22.5DEG  
 Test Speed: HIGH  
 Temperature:24.3°C  
 Operators:  
 Test Date:2024-06-19

γ Range: 0 - 90DEG  
 γ Interval: 1.0DEG  
 Test System:EVERFINE GO-SPEX500\_V1 SYSTEM V2.00.460  
 Humidity:65.0%  
 Test Distance:3.080m [K=1.0000]  
 Remarks:

**AAI Figure**

Test:U:120.28V I:0.1123A P:13.283W PF:0.9830 Freq:59.98Hz UTHDi:0.00% ITHDi:0.00% KDisp:0 Lamp Flux:928.319x1 lm		
NAME: DLDM-2-CCT-15W	TYPE:	WEIGHT:
SPEC.: 3000K	DIM.:	SERIAL No.:
MFR.: DLL	SUR.:	Shielding Angle:



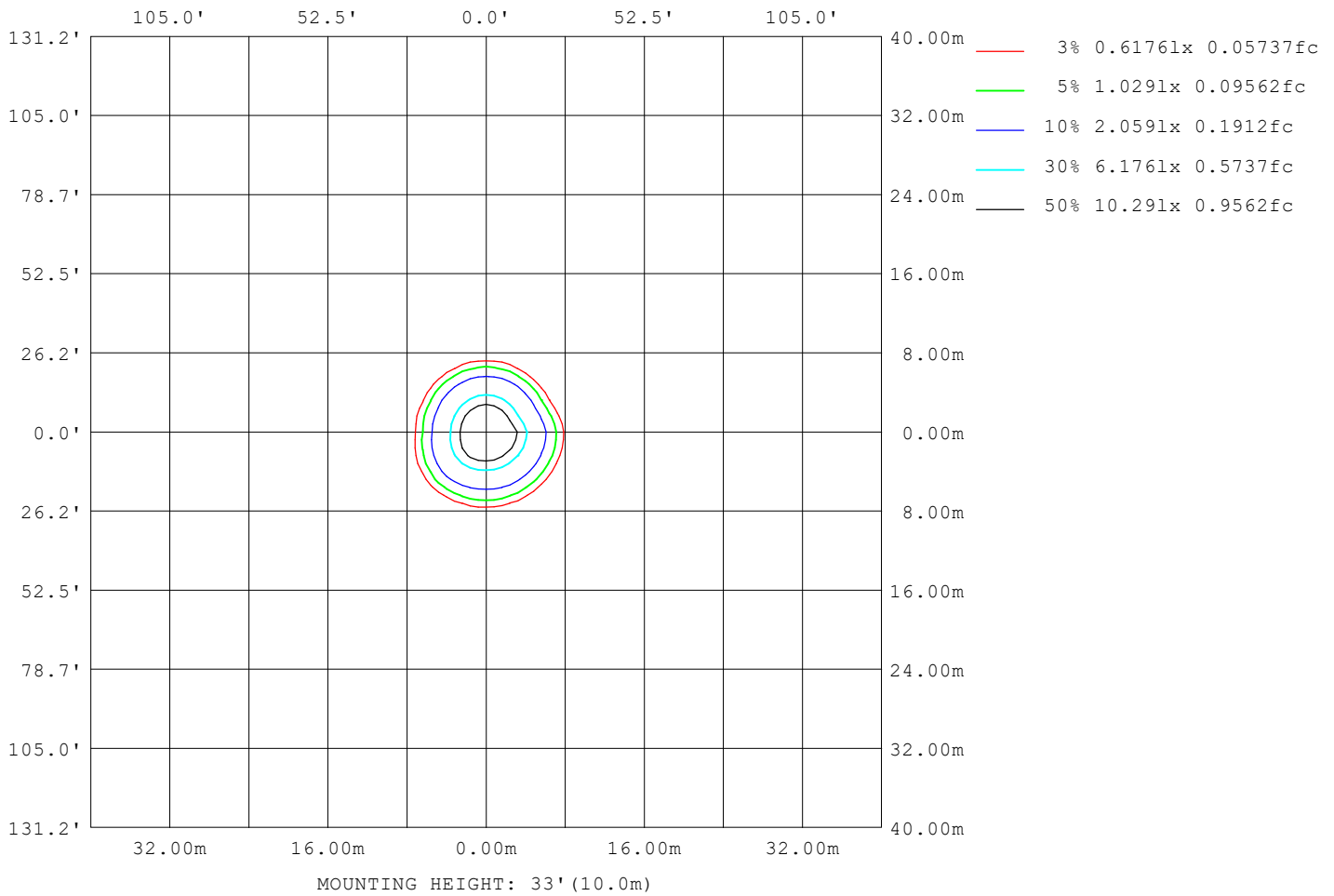
Note:The Curves indicate the illuminated area and the average illumination when the luminaire is at different distance.

C Range: 0 - 360DEG  
 C Interval: 22.5DEG  
 Test Speed: HIGH  
 Temperature:24.3°C  
 Operators:  
 Test Date:2024-06-19

γ Range: 0 - 90DEG  
 γ Interval: 1.0DEG  
 Test System:EVERFINE GO-SPEX500\_V1 SYSTEM V2.00.460  
 Humidity:65.0%  
 Test Distance:3.080m [K=1.0000]  
 Remarks:

**ISOLUX DIAGRAM**

Test:U:120.28V I:0.1123A P:13.283W PF:0.9830 Freq:59.98Hz UTHDi:0.00% ITHDi:0.00% KDisp:0 Lamp Flux:928.319x1 lm		
NAME: DLDM-2-CCT-15W	TYPE:	WEIGHT:
SPEC.: 3000K	DIM.:	SERIAL No.:
MFR.: DLL	SUR.:	Shielding Angle:



C Range: 0 - 360DEG  
 C Interval: 22.5DEG  
 Test Speed: HIGH  
 Temperature: 24.3°C  
 Operators:  
 Test Date: 2024-06-19

γ Range: 0 - 90DEG  
 γ Interval: 1.0DEG  
 Test System: EVERFINE GO-SPEX500\_V1 SYSTEM V2.00.460  
 Humidity: 65.0%  
 Test Distance: 3.080m [K=1.0000]  
 Remarks:

**LED Avg.L Report**

Test:U:120.28V I:0.1123A P:13.283W PF:0.9830 Freq:59.98Hz UTHDi:0.00% ITHDi:0.00% KDisp:0 Lamp Flux:928.319x1 lm		
NAME: DLDM-2-CCT-15W	TYPE:	WEIGHT:
SPEC.: 3000K	DIM.:	SERIAL No.:
MFR.: DLL	SUR.:	Shielding Angle:

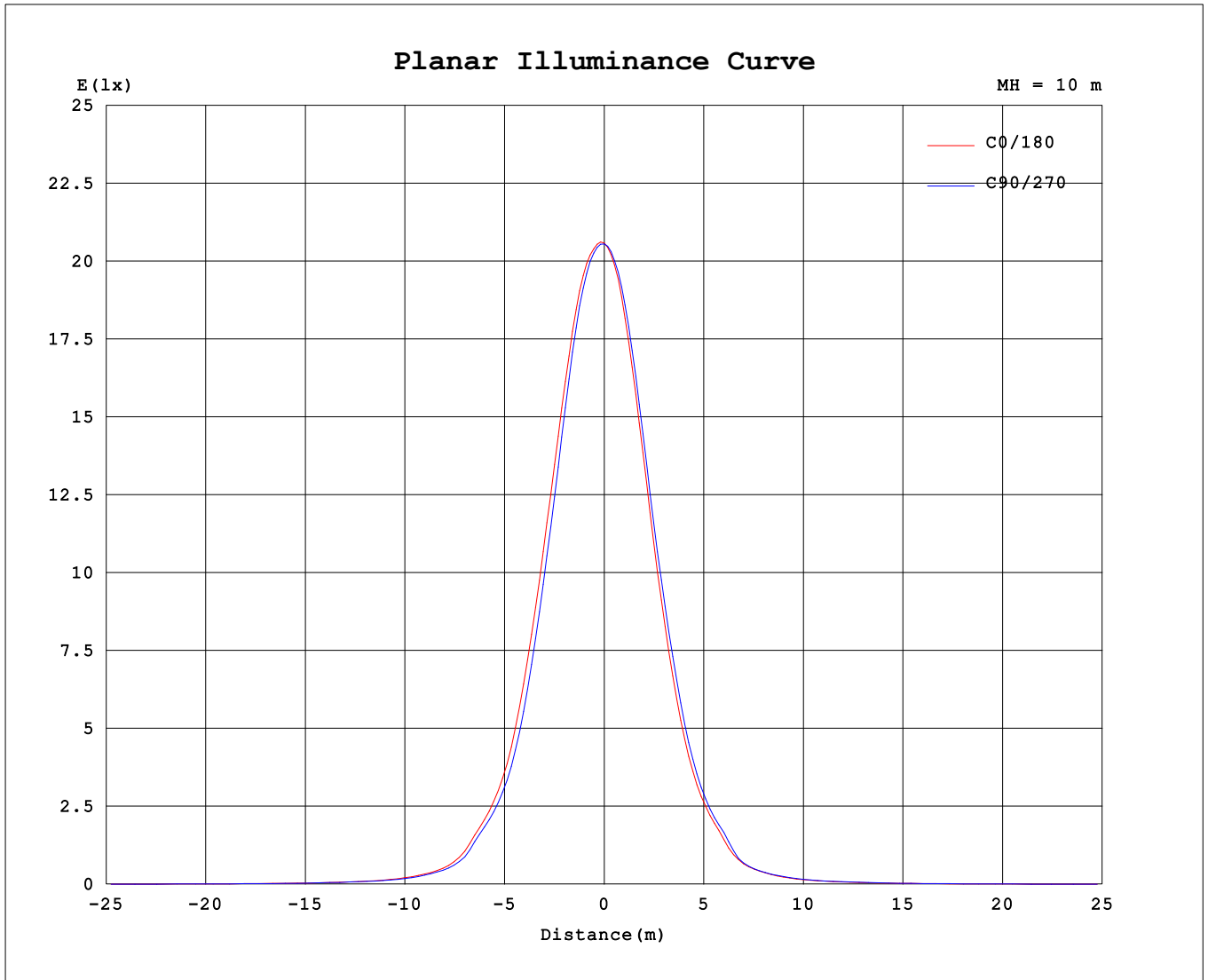
AvgL	cd/m2
L_0~180 (65) av	255
L_0~180 (75) av	190
L_0~180 (85) av	135
L_90~270 (65) av	253
L_90~270 (75) av	188
L_90~270 (85) av	132
L_45 (65) av	254
L_45 (75) av	189
L_45 (85) av	132

Standard: GB/T 29293-2012

C Range: 0 - 360DEG  
 C Interval: 22.5DEG  
 Test Speed: HIGH  
 Temperature:24.3℃  
 Operators:  
 Test Date:2024-06-19

γ Range: 0 - 90DEG  
 γ Interval: 1.0DEG  
 Test System:EVERFINE GO-SPEX500\_V1 SYSTEM V2.00.460  
 Humidity:65.0%  
 Test Distance:3.080m [K=1.0000]  
 Remarks:

Planar Illuminance Curve



C Range: 0 - 360DEG  
 C Interval: 22.5DEG  
 Test Speed: HIGH  
 Temperature: 24.3 °C  
 Operators:  
 Test Date: 2024-06-19

γ Range: 0 - 90DEG  
 γ Interval: 1.0DEG  
 Test System: EVERFINE GO-SPEX500\_V1 SYSTEM V2.00.460  
 Humidity: 65.0%  
 Test Distance: 3.080m [K=1.0000]  
 Remarks:

